

Stainless Steel Accessories

REAR VENT COVER W/ or W/O WELDING, PETERBILT/ KENWORTH W990,

INSTALLATION INSTRUCTIONS

1. Apply generous amount of silicones on the surface of vent cover except bottom area (See figure 1. Silicones should be closer to edge and thicker especially line areas).
2. Remove plastic covers from bended flanges
3. Check installation direction. Stopper shapes must be always right bottom (see figure 2).

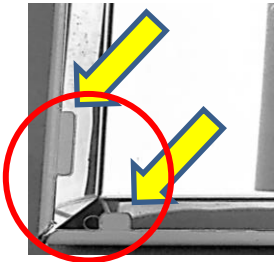


Figure 2. Stopper Shape

4. Set up Position: Hook stopper area into vent cover from right bottom corner (see figure 3).

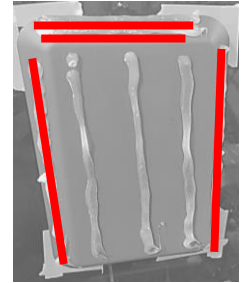


Figure 1. Silicone Area

5. Install right edge: Rotate part to count clockwise, but do not touch left side edge yet (see figure 4).
6. Install left edge: Pull and push left corner (see figure 5).
7. Install top edge: Pull down vent cover (see figure 6).
8. Apply pressure to all surfaces except bottom area.

9. Remove all remaining plastic from part and repeat the same process if necessary.

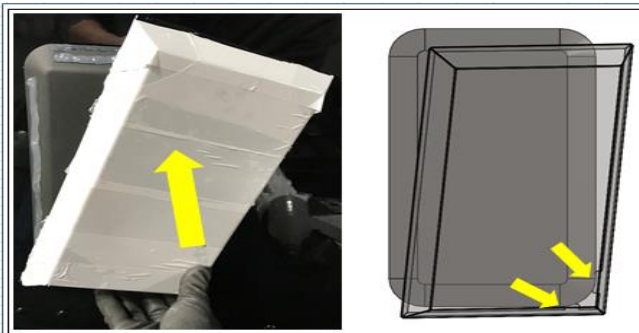


Figure 3. Set Up Position

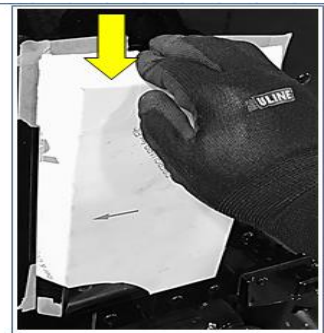


Figure 6. Install Top Edge

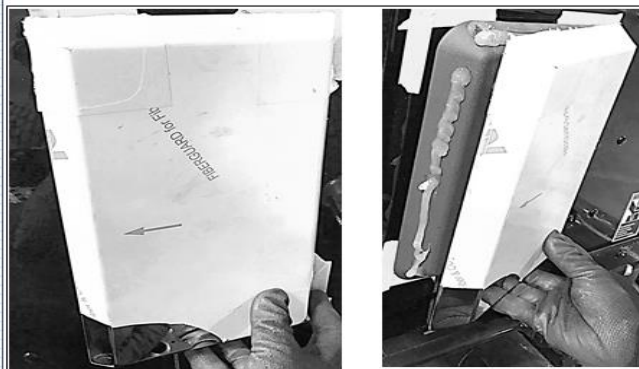


Figure 4. Install Right Edge



Figure 5. Install Left Edge