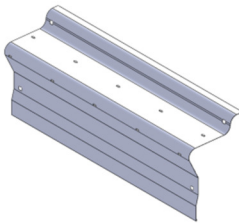


BATTERY/TOOL BOX COVER KENWROTH W900B

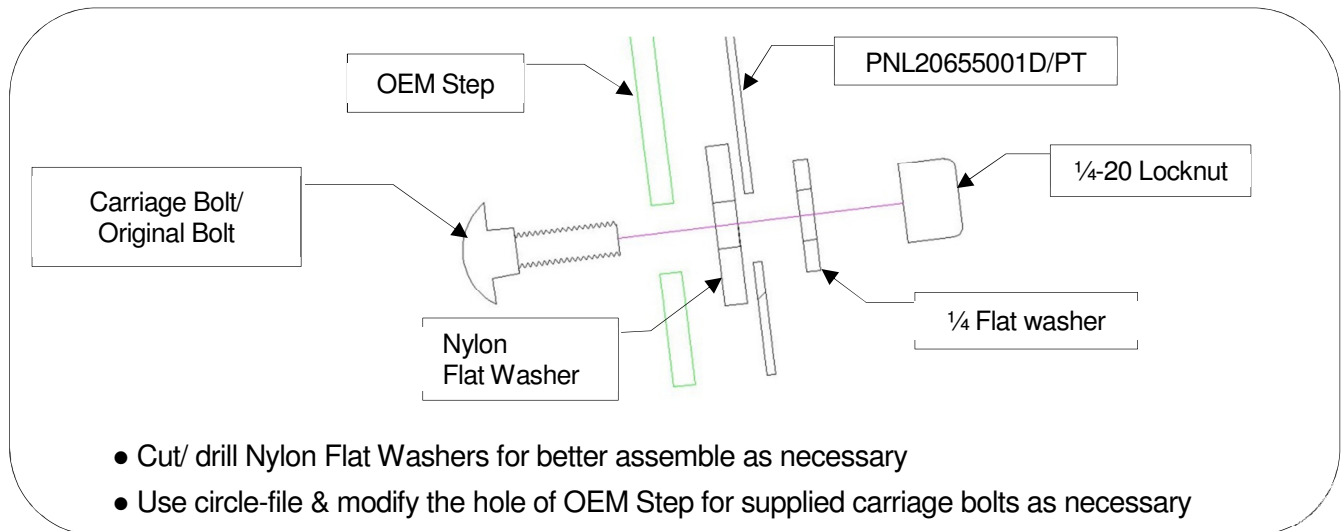
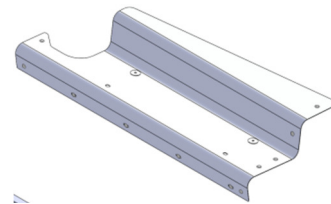
INSTALLATION INSTRUCTIONS

1. Remove OEM battery/tool box cover and disassemble OEM Step plate
2. Peel plastic from around hole locations and install OEM Step plate (see below more detail)

< PNL20655001D >



< PNL20655001PT >



3. Attach panels to the truck with the original/ supplied hardware, washers and locknuts
4. Must use Nylon Flat Washers between PNL20655001PB & Truck body
5. Tighten all screws
6. Peel all remaining plastic, and clean with glass cleaner as necessary